

L6Q

- Aluminum-Alloy IP65 single point load cell
- Colourless anodized
- Suitable for single or double load cell structured platform scales
- Max platform size 400mmx400mm



Features

- Capacities: 5kg~200kg
- High accuracy



test certificate no. D09-07.06 and TC7969 Revision 0 C of C no R60/2000-NL1-11.22



Certificate no. 11-104

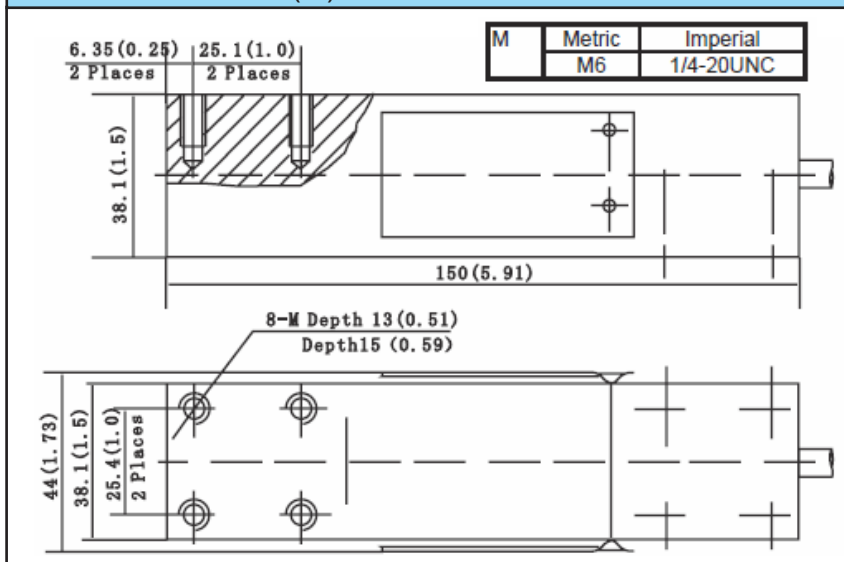
Specifications

Capacity	kg	50/100/150/200/250
Accuracy		C3
Maximum Number of Verification Intervals	Nmax	3000
Minimum Number of Verification Intervals	Vmin	Emax/7000
Output Sensitivity	(mV/V)	2.0±0.2
Input Resistance	(Ω)	406±6
Output Resistance	(Ω)	350±3
Insulation Resistance	(MΩ)	≥5000 (50VDC)
Zero Balance	(%FS)	2
Temperature, Compensated	(°C)	-10~+40
Temperature, Operating	(°C)	-35~+65
Excitation, Recommended	(V)	5~12 (DC)
Excitation, Max	(V)	18 (DC)
Safe Overload	(%FS)	120
Ultimate Overload	(%FS)	150

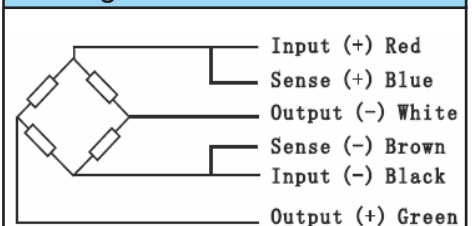
Cross Reference

Manufacturer	Model
Revere	650
Tedea	1241
Celtron	LPS 60kg~200kg

Dimensions in mm (in)



Wiring



- Shielded, 6 conductor cable
- Cable diameter: 0.19in
- Standard cable length: 3m
- Shield not connected to element
- Cable jacket in PVC